



Project: _____ Type: _____

Item. No. _____

Location: _____

Notes: _____

switches

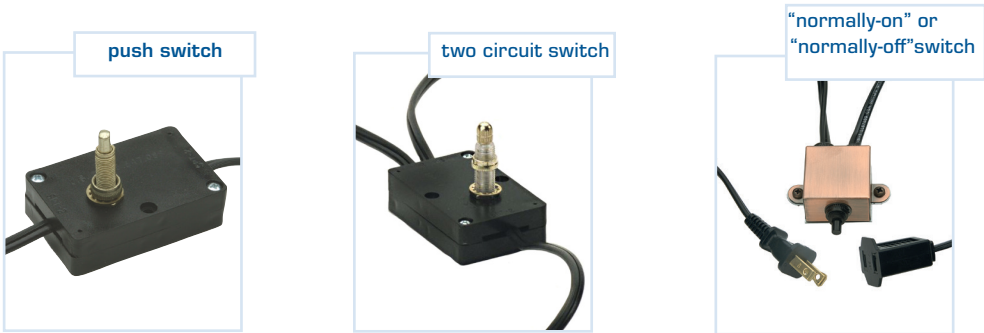
lighting controls

standard features

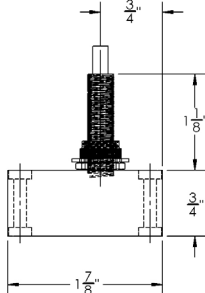
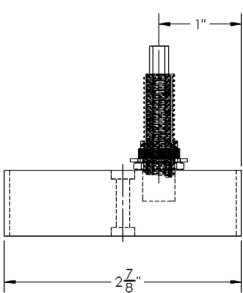
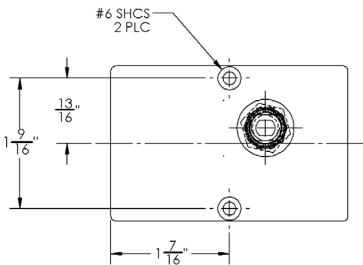
- Electrical rating: 120V, 60Hz
- Power cord: 10' 18/2 SPT-2 (black) with polarized male plug, 24" 18/2 SPT-2 (black) extension with female connector
- Finish: black
- Construction: high impact, flame resistant PVC
- Intended for 3/4" panel thickness or less
- UL and cUL

optional features

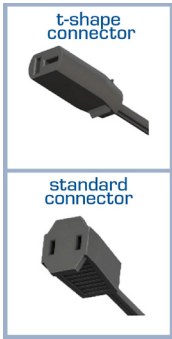
- Contact factory for custom options



box dimensions for push switch & two circuit switch



female connector style



ordering information switches

item number t-shape female	item number standard female	catalog number	description
7000-3121	7000-0570	PH3121	Push switch, 3A, 10' power cord, (1) 24" female connector
7000-3221	7000-0597	PH3221	Push switch, 3A, 10' power cord, (2) 24" female connectors
7000-3141	7000-0588	PH3141	Remote push switch, 10' power cord, (1) 24" female connector, push switch on 36" lead
7000-3241	7000-0920	PH3241	Remote push switch, 10' power cord, (2) 24" female connectors, push switch on 36" lead
7000-3251	7000-0660	PH3251	2-circuit switch, 2.5A, 10' power cord, (2) 24" female connectors
7000-3451	7000-0569	PH3451	2-circuit switch, 2.5A, 10' power cord, (4) 24" female connectors
7000-0413	7000-0758	DC413	"Normally-on" switch, bronze box, 3A, 10' power cord, (1) 24" female connector (Closing door activates switch to turn lights <i>off</i> .)
7000-0423	7000-0921	DC423	"Normally-off" switch, bronze box, 3A, 10' power cord, (1) 24" female connector (Closing door activates switch to turn lights <i>on</i> .)