



Project: _____ Type: _____

Item No. _____

Location: _____

Notes: _____

st series

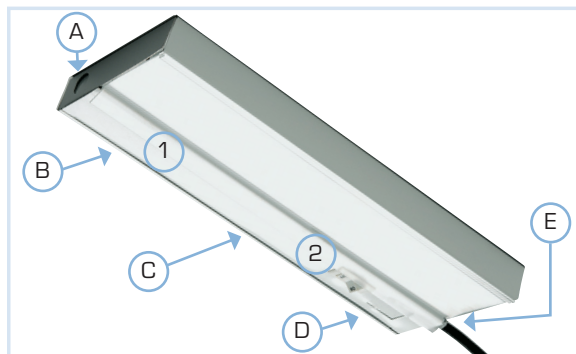
task lights

standard features

- Electrical rating: 120V, 60Hz
- Lamp: T8, cool white (included)
- Ballast: electronic
- Power cord: 9' 16/3 SJT (black)
- Finish: white baked enamel
- Construction: heavy gauge steel channels
- Installation method: screw holes located in fixture body
- Snap-in acrylic linear lens
- Solid front reduces direct glare
- On/off rockerswitch
- UL and cUL

options

- Ballast for other voltage requirements
- Romex connector for hardwiring by an electrician
- Female connecting cables to link adjacent fixtures
- Grounded convenience outlet
- Switches and sensors
- Other finishes
- Lamps for other color temperatures
- Contact factory for custom options

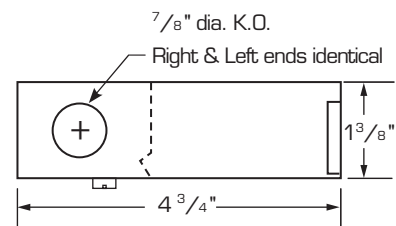


Power cord locations (A-E):

E is standard
specify alternate power cord location on specification sheet

Switch locations (1-2):

2 is standard
specify alternate switch location on specification sheet



ordering information

item number	catalog number	length	lamp
4201-0207	ST1518	18 1/4"	F15T8/CW
4201-0237	ST1724	24 1/4"	F17T8/CW
4201-0257	ST2536	36 1/4"	F25T8/CW
4201-0267	ST3248	48 1/4"	F32T8/CW
4201-0317	ST5072	72 1/4"	(2) F25T8/CW (T)
4201-0327	ST5784	84 1/4"	(1) F25T8/CW, & (1) F32T8/CW (T)

(T) denotes tandem lamps.

replacement lamps

item number	catalog number	description
485-385	F15T8/CW	15 watt, T8
485-355	F17T8/CW	17 watt, T8
485-356	F25T8/CW	25 watt, T8
485-358	F32T8/CW	32 watt, T8

See Lamps spec sheet for additional options.