



Project:	Type:
Item. No.	
Location:	
Notes:	

right angle mount

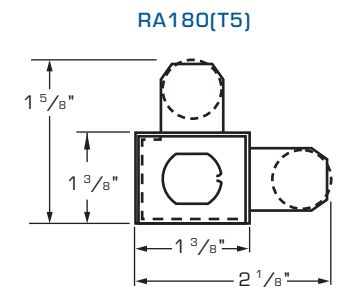
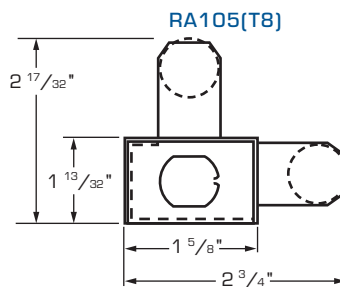
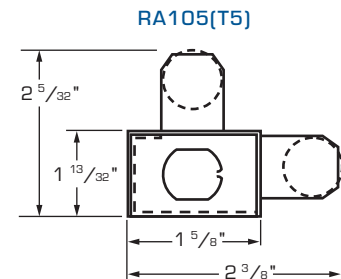
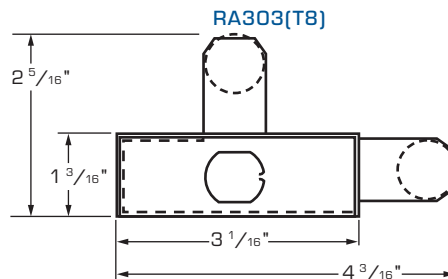
strip lights

standard features

- Electrical rating: 120V, 60Hz
- Lamp: T5 or T8 (not included)
- Ballast: electronic
- Power cord: 10' 16/3 SPT (white)
- Finish: white baked enamel
- Construction: heavy gauge steel channels
- Installation method: screw holes located in fixture body
- Available in a variety of lengths
- UL and cUL

options

- Ballasts for other voltage requirements
- Romex connector for hardwiring by an electrician
- Female connecting cables to link adjacent fixtures
- Switches and sensors
- Grounded convenience outlet
- Mounting tabs
- Contact factory for custom options
- Lamps sold separately



ordering information

item number	catalog number	lamps (not included)		length	dimensions	
		quantity	type		width	height
4001-2000	RA303-3018E2T8	2	F15T8	18"	3 1/16"	1 3/16"
4001-2010	RA303-3424E2T8	2	F17T8	24"	3 1/16"	1 3/16"
4001-2020	RA303-5036E2T8	2	F25T8	36"	3 1/16"	1 3/16"
4001-2030	RA303-6448E2T8	2	F32T8	48"	3 1/16"	1 3/16"
4001-2040	RA303-8060E2T8	2	F40T8	60"	3 1/16"	1 3/16"
4001-2050	RA303-10072E4T8	4	F25T8(T)	72"	3 1/16"	1 3/16"
4001-2060	RA303-12896E4T8	4	F32T8(T)	96"	3 1/16"	1 3/16"
4001-2100	RA105-2822E2T5	2	F14T5	22"	1 5/8"	1 13/32"
4001-2110	RA105-4234E2T5	2	F21T5	34"	1 5/8"	1 13/32"
4001-2120	RA105-5646E2T5	2	F28T5	46"	1 5/8"	1 13/32"
4001-2130	RA105-3424E2T8	2	F17T8	24"	1 5/8"	1 13/32"
4001-2140	RA105-5036E2T8	2	F25T8	36"	1 5/8"	1 13/32"
4001-2150	RA105-6448E2T8	2	F32T8	48"	1 5/8"	1 13/32"
4001-2200	RA180-1612E2T5*	2	F8T5	12 5/32"	1 3/8"	7/8"
4001-2220	RA180-2822E2T5*	2	F14T5	22 7/16"	1 3/8"	7/8"
4001-2250	RA180-4234E2T5*	2	F21T5	34 9/32"	1 3/8"	7/8"
4001-2270	RA180-5646E2T5*	2	F28T5	46 1/16"	1 3/8"	7/8"
4001-2280	RA180-7057E2T5*	2	F35T5	57 13/16"	1 3/8"	7/8"

*Denotes custom order- minimum quantities apply.

(T) denotes tandem lamps.

See Lamps spec sheet for additional options.