



Project:

Type:

Item. No.

Location:

Notes:

## undercabinet lights

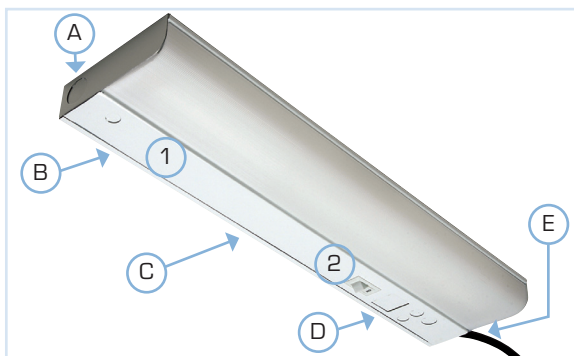
f series

### standard features

- Electrical rating: 120V, 60Hz
- Lamp: T8, cool white (included)
- Ballast: electronic
- Power cord: 9' 16/3 SJT (black)
- Finish: white baked enamel
- Construction: heavy gauge steel channels
- Installation method: screw holes located in fixture body
- White acrylic diffuser
- On/off rockerswitch
- UL and cUL

### options

- Ballast for other voltage requirements
- Romex connector for hardwiring by an electrician
- Female connecting cables to link adjacent fixtures
- Switches and sensors
- Lamps for other color temperatures
- Grounded convenience outlet
- Other finishes
- Contact factory for custom options



Power cord locations (A-E):

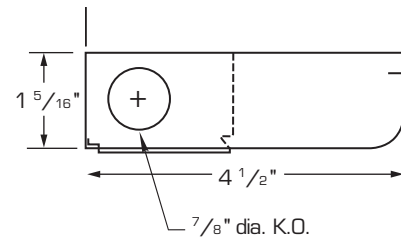
E is standard

specify alternate power cord location on specification sheet

Switch locations (1-2):

2 is standard

specify alternate switch location on specification sheet



### ordering information

item number	catalog number	length	lamp
4201-0769	F1518	18 1/8"	F15T8/CW
4201-0789	F1724	24 1/8"	F17T8/CW
4201-0799	F2536	36 1/8"	F25T8/CW
4201-0809	F3248	48 1/8"	F32T8/CW

### replacement lamps

item number	catalog number	description
485-385	F15T8/CW	15 watt, T8
485-355	F17T8/CW	17 watt, T8
485-356	F25T8/CW	25 watt, T8
485-358	F32T8/CW	32 watt, T8

See Lamps spec sheet for additional options.