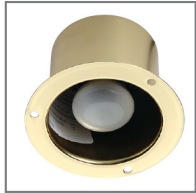


# flanged recessed downlight ordering options



Flanged recessed downlights are available for purchase from our website [specialtylighting.com](http://specialtylighting.com).

## fixture & mounting options (lamp/bulb included)



**FA35 (2 7/8" height)**  
Mounting options: ring,  
spring clip, screw hole



**35HR16**



**FA40 (2 7/8" height)**  
Mounting options: ring,  
spring clip, screw hole



**40R14**

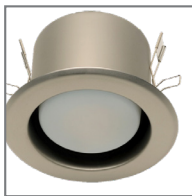


**FB50 (3 5/8" height)**  
Mounting options: ring,  
spring clip, screw hole



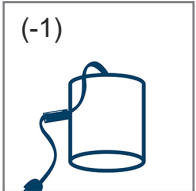
**50PAR20**

### LED option



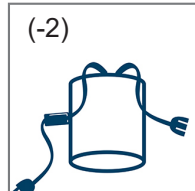
**RDF60 (2 7/8" height)**  
integrated LED  
non-replaceable lamp  
Contact factory for  
ordering information.

## wiring options



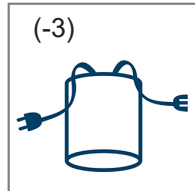
(-1)

10' power cord  
with rollswitch  
& male plug



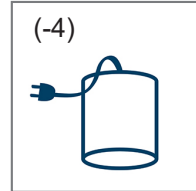
(-2)

10' power cord  
with rollswitch  
& male plug,  
30" power cord with  
female connector



(-3)

30" power cord  
with male plug,  
30" power cord with  
female connector



(-4)

30" power cord with  
male plug



rollswitch

## connector options



standard female  
connector



t-shape female  
connector

## finish options (color may vary from actual finish)



black (BK)  
FA35, FA40, FB50



polished chrome (PC)  
FA35, FA40,  
FB50 Ring &  
Spring Clip Only



polished brass (PB)  
FA35, FA40, FB50




antique brass (AB)  
FA35, FA40, FB50



brushed nickel (BN)  
FA35, FA40,  
FB50 Ring &  
Spring Clip Only

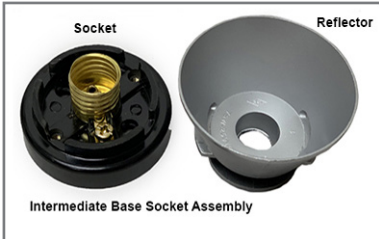
# flanged recessed downlight ordering options (continued)



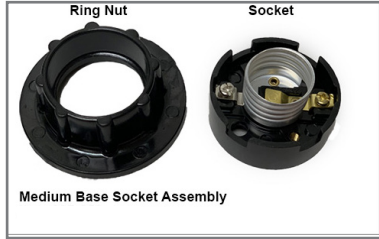
 The following replacement parts are available to purchase from our website for GR, GS, GA, FA, FB, FD, FH, HW & TV series.

## replacement - downlight sockets

replacement socket  
for GR & FH series



replacement socket  
for FA, FB, FD, GS, GA, HW, & TV series



## replacement - lamps



40R14  
medium base



35HR16  
medium base



50PAR20  
medium base

## replacement - mounting ring



downlight mounting ring

## related products



Three level touch  
dimmer



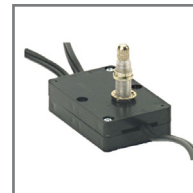
full range rotary  
dimmer



hi-lo dimmer



push switch



two circuit switch



"normally-on" or  
"normally-off"  
switch